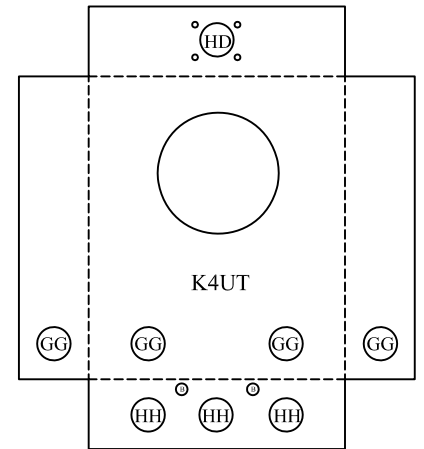
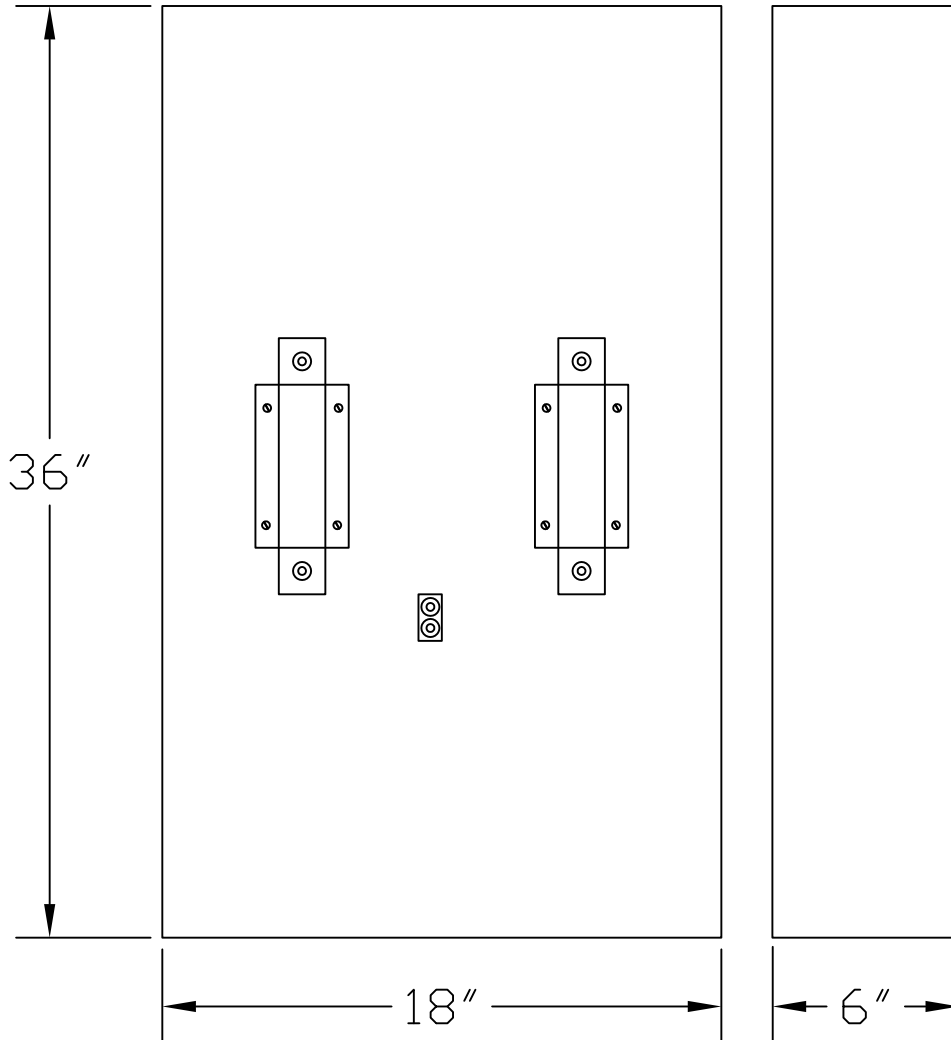
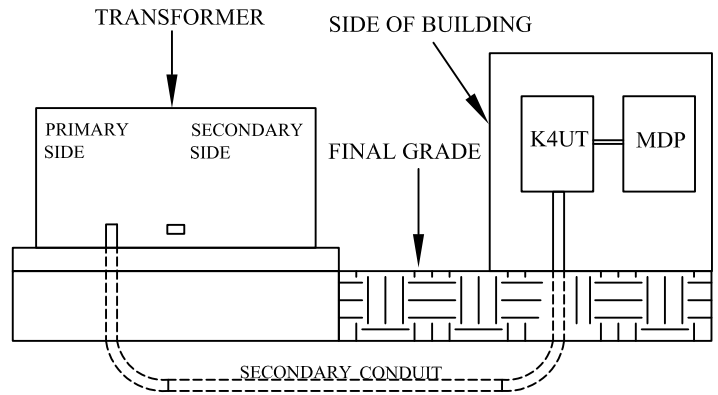


**PROJECT REQUIRING SINGLE PHASE 400 METER ENCLOSURE
CTS NOT REQUIRED - NOT A MAIN DISCONNECT**

METER PANEL SPECIFICATIONS

- 1) 400-480 AMP CONTINUOUS METER MOUNTING EQUIPMENT - TYPE K-4UT - RESIDENTIAL /COMMERCIAL
- 4 TERMINAL FOR SINGLE PHASE - 3 WIRE
- 2) 36" HIGH X 18" WIDE X 6" DEEP
- 3) BYPASS NO - 56495
- 4) URD SERVICE ONLY - MULTIPLE SERVICES APPROVED
- 5) HD HUB OPENING
- 6) STEEL ENCLOSURE
- 7) LANDIS AND GYR CATALOG NO - 9810-8507



RECOMENDED LUGS

LUG POSITION	SINGLE CAT NO	PARALLEL CAT NO
LINE	(2) 56733 S.E.	(2) 56427 S.E.
LOAD	(2) 56477 STD	(2) 56425 STD
NEUTRAL	(2) 56476 STD	(2) 56426 STD

KNOCKOUTS (INCHES)

B: 1/2,3/4
GG: 2-1/2, 3, 3-1/2
HH: 2-1/2, 3, 3-1/2, 4
HD: Ø4.281 HUB OP



DATE: 09/09/14
 DRAWN BY: E.J.W.
 APRV'D BY:
 APRV'D BY:
 SCALE: N.T.S.

TITLE:
**400 AMP SINGLE PHASE
 METER ENCLOSURE
 CTS NOT REQUIRED**

REVISIONS	
BY:	DATE:

STANDARD No.

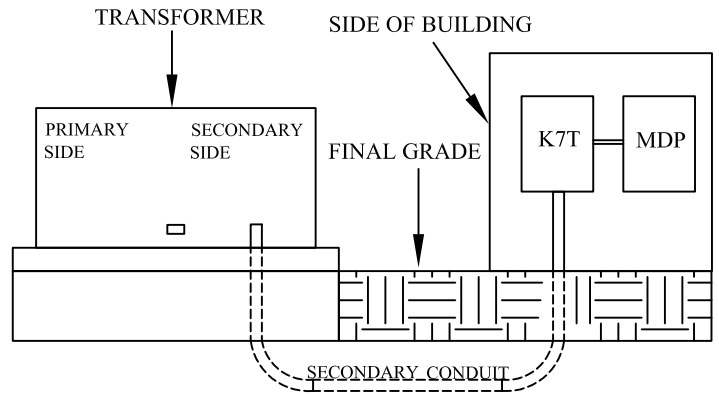
PAGE:

1 OF 7

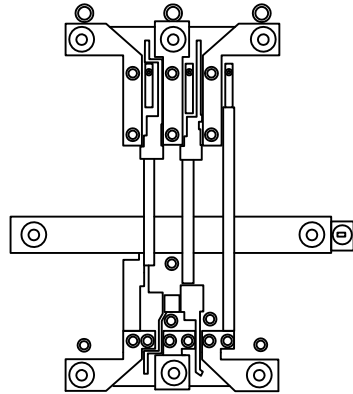
PROJECT REQUIRING POLYPHASE 400/600 METER ENCLOSURE
 CTS NOT REQUIRED - NOT A MAIN DISCONNECT

METER PANEL SPECIFICATIONS

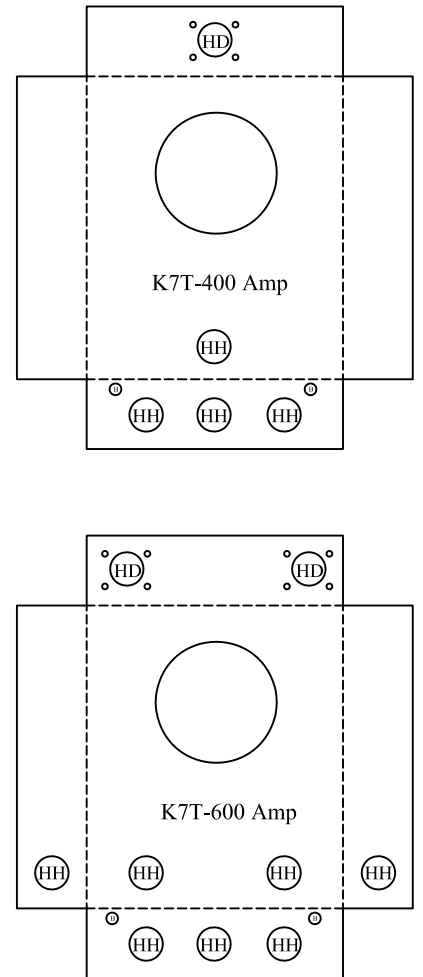
- 1) 480/600 AMP CONTINUOUS METER MOUNTING EQUIPMENT - TYPE K7- RESIDENTIAL /COMMERCIAL
- 7 TERMINAL FOR POLYPHASE - 3 & 4 WIRE
- 2) 43.1" HIGH X 20.3" WIDE X 6.1" DEEP
- 3) BYPASS NO - 58888 or 69623
- 4) URD SERVICE ONLY - MULTIPLE SERVICES APPROVED
- 5) HD HUB OPENING
- 6) STEEL ENCLOSURE
- 7) LANDIS AND GYR CATALOG NO - 9817-9506



43.1"



20.3" 6.1"



KNOCKOUTS (INCHES)

B: 1/2,3/4
HH: 2-1/2, 3, 3-1/2, 4
HD: Ø4.281 HUB OP



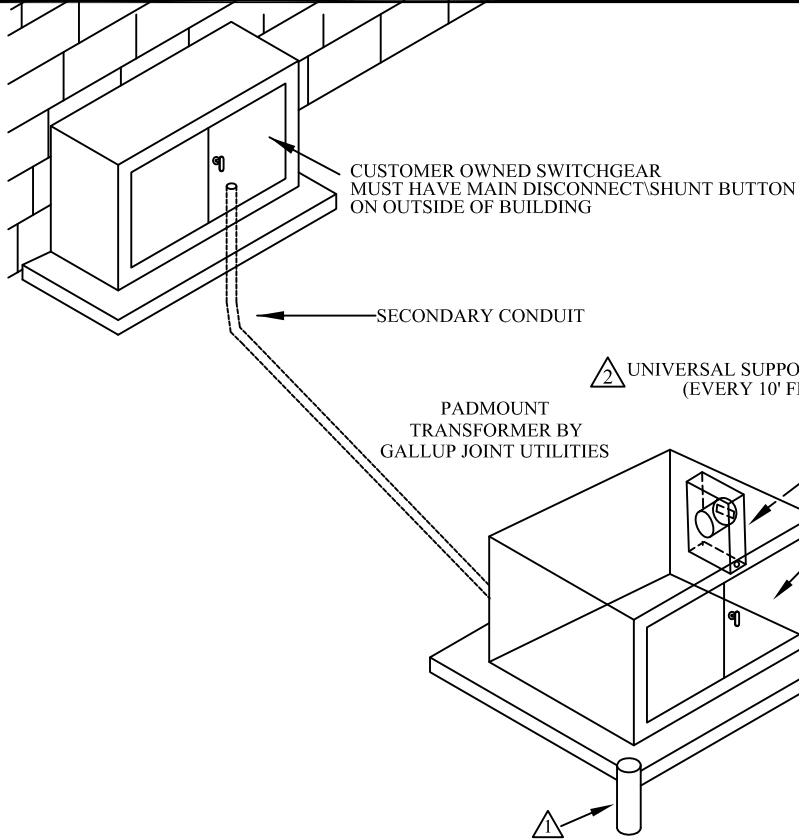
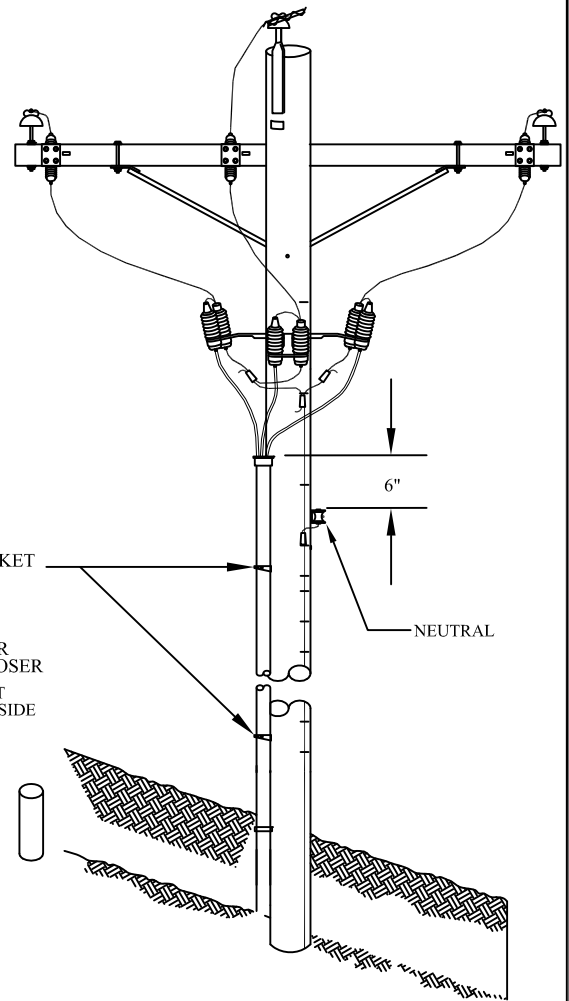
DATE: 09/09/14
 DRAWN BY: E.J.W.
 APRV'D BY:
 APRV'D BY:
 SCALE: N.T.S.

TITLE:
**400/600 AMP POLYPHASE
 METER ENCLOSURE
 CTS NOT REQUIRED**

REVISIONS	
BY:	DATE:

STANDARD No.
 PAGE:
 2 OF 7

MAX # OF SECONDARY CONDUCTORS PER PHASE					
SECONDARY VOLTAGE	TRANSFORMER KVA SIZE				
	75	150	300	500	750
120 / 208Y	6 350 MCM	6 350 MCM	8 750 MCM	8 750 MCM	N/A
277 / 480Y	6 350 MCM	6 350 MCM	6 350 MCM	8 750 MCM	8 750 MCM



REFERENCES

- 1 SEE THREE PHASE TRANSFORMER PAD
- 2 SEE UNIVERSAL SUPPORT BRACKET
- 3 SEE METER PANEL SINGLE CUSTOMER

NOTES

1. TRANSFORMER SHALL BE PROTECTED BY GUARD POSTS IF PLACED IN TRAFFIC AREA.
2. SEE TABLE ABOVE FOR MAX NUMBER OF SECONDARY CONDUCTORS PER PHASE.
3. CONCRETE PAD-GUARD POST AND SECONDARY CONDUCTORS PROVIDED BY CUSTOMER.
4. METERING CONDUIT BY CUSTOMERS.
5. FRONT (DOOR) SIDE OF TRANSFORMER MUST FACE STREET OR PARKING LOT.



DATE: 09/09/14
 DRAWN BY: E.J.W.
 APRV'D BY:
 APRV'D BY:
 SCALE: N.T.S.

TITLE:
**COMMERCIAL SERVICE ENTRANCE
 METER ON TRANSFORMER**

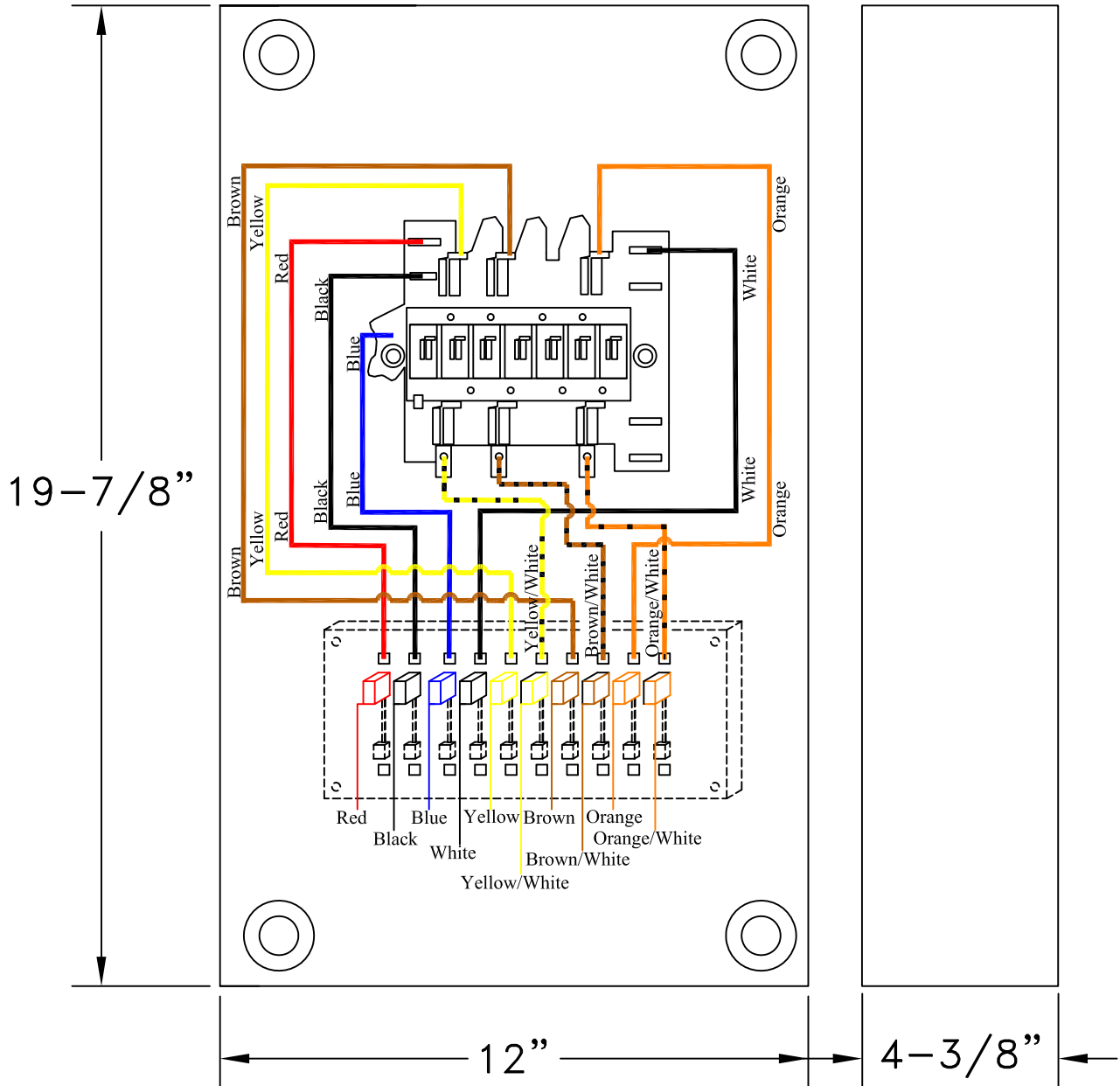
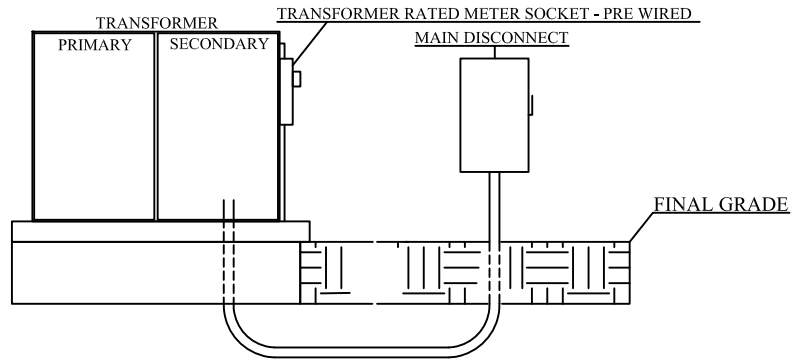
REVISIONS	
BY:	DATE:

STANDARD No.

 PAGE:
 3 OF 7

Meter Panel Specifications:

- 1) NEMA ; ANSI C12.7; UL414
- 2) 19-7/8" High x 12" Wide x 4-3/4" Depth
- 3) One Piece Cover - Ringless Only
- 4) Pre-Wired Test Block To Be Included
- 5) AW Hub Provision
- 6) Brooks Utility Products 3128 HV Series Catalog No. 602-3128 HV-C13 or Equivalent

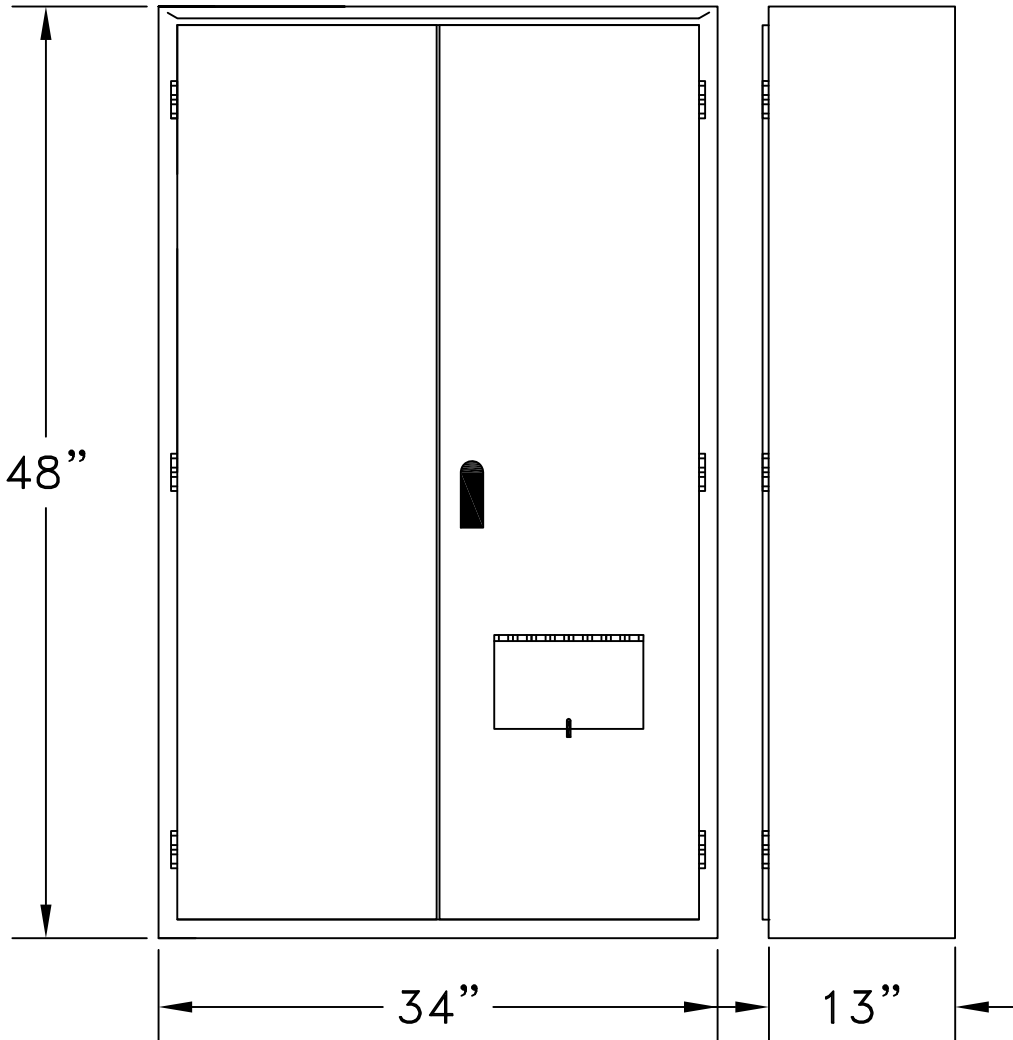
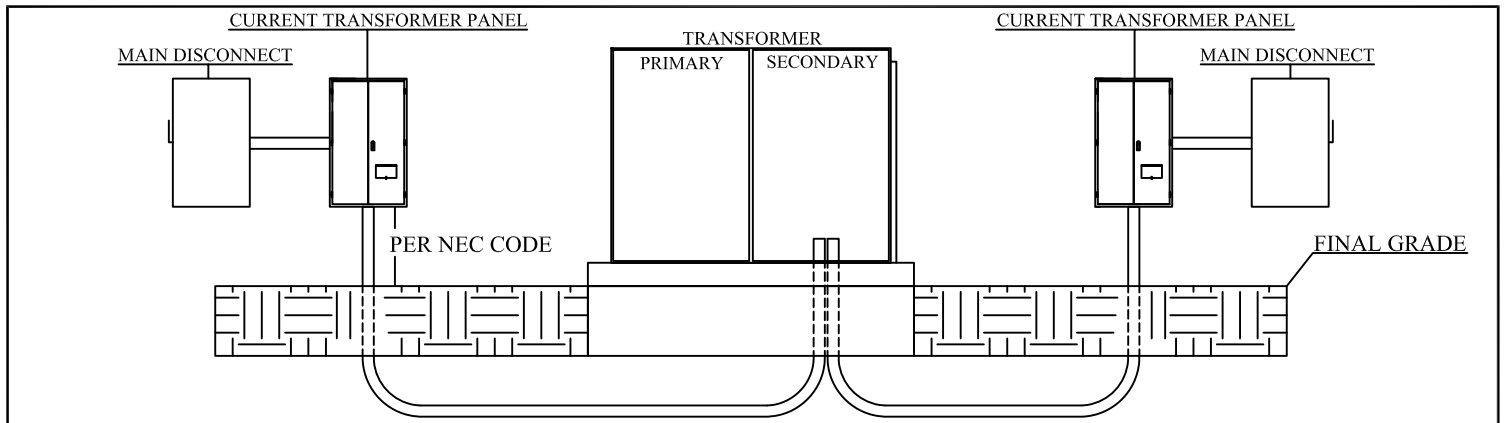


DATE: 09/09/14
 DRAWN BY: E.J.W.
 APR'V'D BY:
 APR'V'D BY:
 SCALE: N.T.S.

TITLE:
**TRANSFORMER RATED
 METER SOCKET - PRE WIRED
 SINGLE CUSTOMER OVER 200 AMPS**

REVISIONS	
BY:	DATE:

STANDARD No.
 PAGE:
 4 OF 7



Current Transformer and Meter Combination Panel Specifications with viewing window:

Meter Panel Specifications:

- 1) Type 3R Construction
- 2) 48" High x 34" Wide x 13" Depth
- 3) Double - Doors With Sealable 3-Point Latch Handle
- 4) Hinged Utility Sealable Meter Window
- 5) 3/4" Plywood Backboard



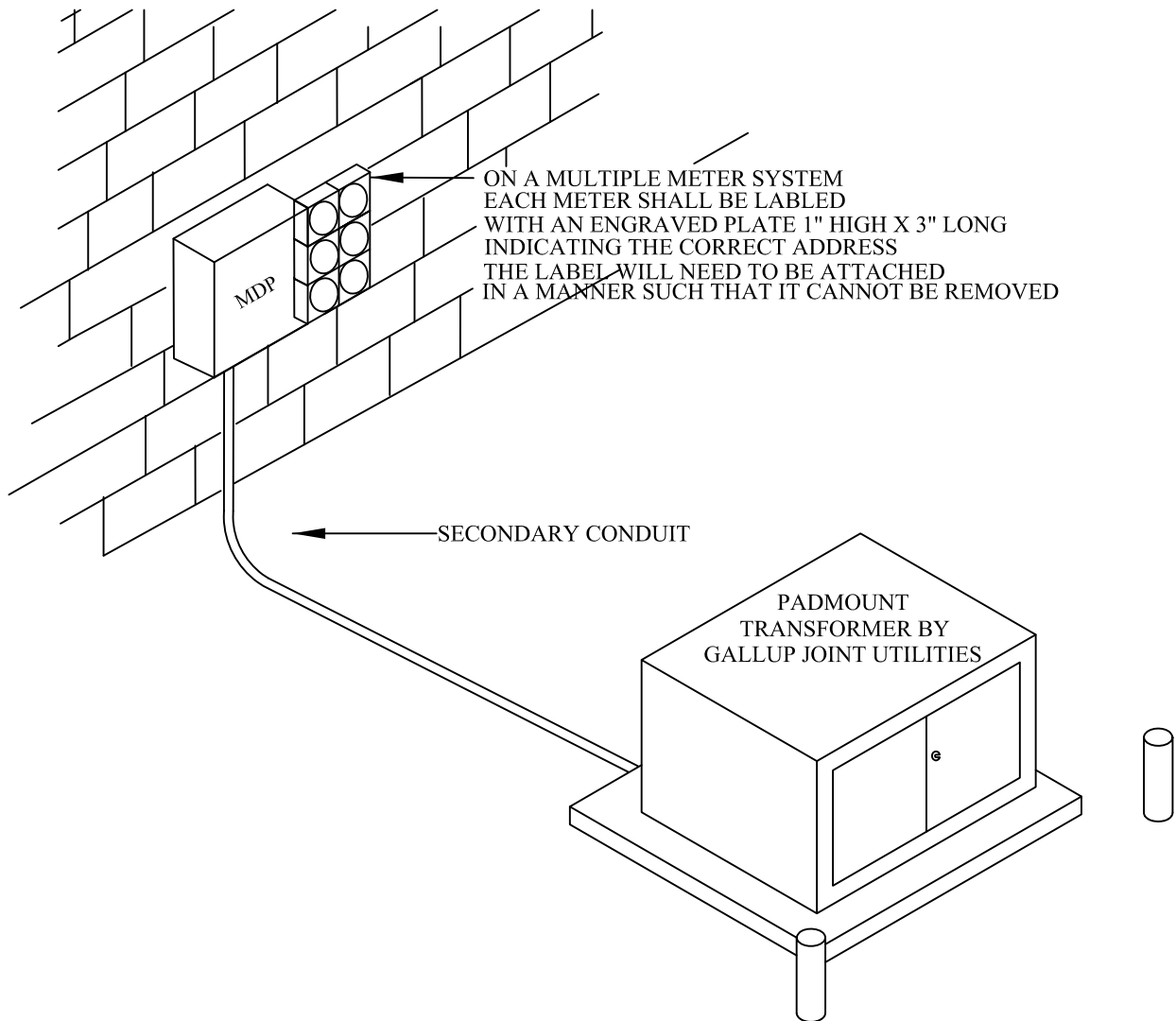
DATE: 08/19/08
 DRAWN BY: E.J.W.
 APRV'D BY:
 APRV'D BY:
 SCALE: N.T.S.

TITLE:
**CURRENT TRANSFORMER
 PANEL SPECIFICATIONS
 TWO CUSTOMERS OR MORE**

REVISIONS	
BY:	DATE:

STANDARD No.

 PAGE:
 5 OF 7

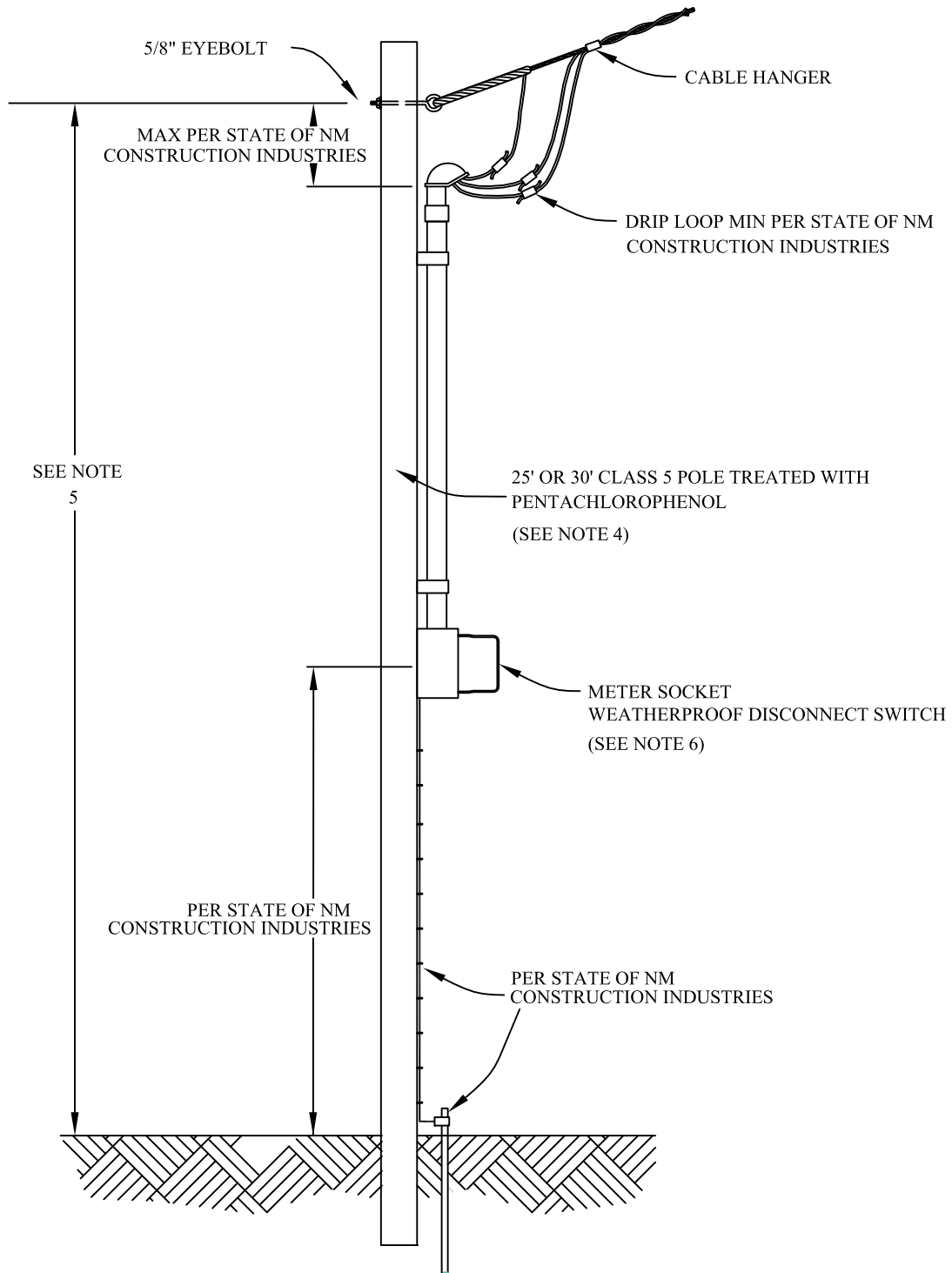


DATE: 09/09/14
 DRAWN BY: E.J.W.
 APRV'D BY:
 APRV'D BY:
 SCALE: N.T.S.

TITLE:
**MULTIPLE METERS - 200 AMPS
 OR LESS
 COMMERCIAL AND RESIDENTIAL**

REVISIONS	
BY:	DATE:

STANDARD No.
 PAGE:
 6 OF 7



NOTES

1. INSTALL BRACING, GUY OR SET IN CONCRETE AS REQUIRED DEPENDING ON SOIL CONDITIONS, LENGTH OF SERVICE, ETC.
2. IDENTIFY EACH METER SOCKET WITH A LOT OR SPACE NUMBER.
3. ALL ITEMS OTHER THAN CABLE HANGER FURNISHED AND INSTALLED BY CONTRACTOR.
4. COORDINATE WITH GALLUP JOINT UTILITIES ENGINEERS FOR ALLOWABLE POLE SIZE.
5. RESIDENTIAL DRIVEWAY OR SIDE WALK.....15' CLEARANCE
ROADWAY OR ALLEY.....22' CLEARANCE
6. OTHER OPTIONS: METER/MAIN, METERMAIN BRANCH, OR COMBINATION SERVICE ENTRANCE.

	DATE: 09/09/14	TITLE: METER POLE FOR PERMANENT and TEMPORARY INSTALLATIONS	REVISIONS		STANDARD No.
	DRAWN BY: E.J.W.		BY:	DATE:	
	APRV'D BY:		E.J.W.	07/01/11	PAGE:
	SCALE: N.T.S.				7 OF 7