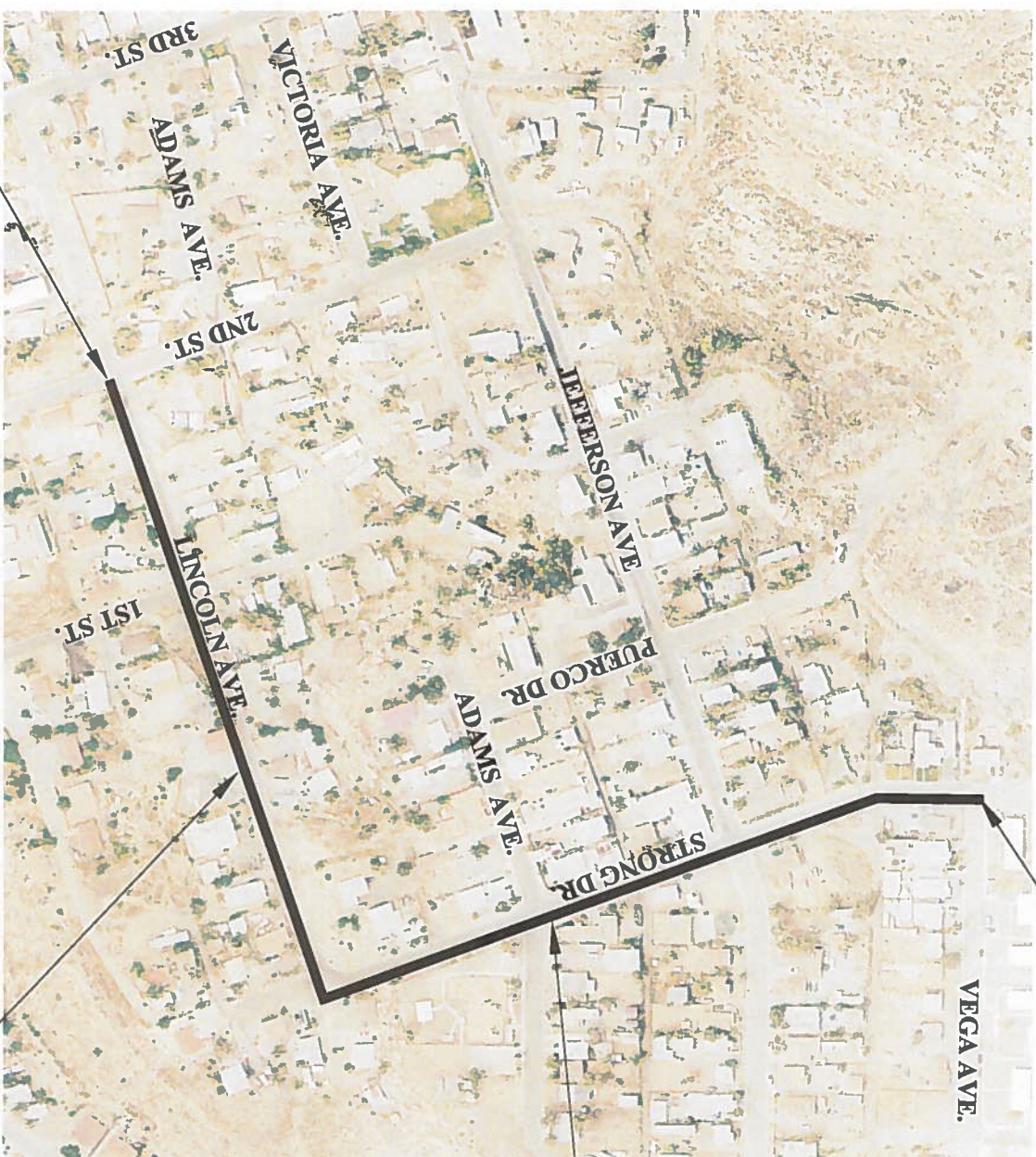


2021/2022-3 WATERLINE REPLACEMENT IN LINCOLN & STRONG FROM 2ND TO VEGA PRELIMINARY ENGINEERS PLAN

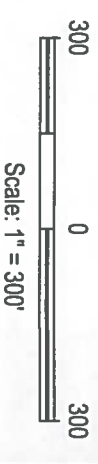


TIE-IN TO EXISTING
WATERLINE

NEW 6" AWWA C900-07 DR-18
WATERLINE W/ APPURTENANCES
IN STRONG DR.

NEW 6" AWWA C900-07 DR-18
WATERLINE AND 8" SDR-35
SEWER W/ APPURTENANCES
LINCOLN AVE.

TIE-IN TO EXISTING
WATERLINES



**DePAULI ENGINEERING
& SURVEYING, LLC.**
CIVIL ENGINEERS
& LAND SURVEYORS

for the
CITY OF GALLUP
MCKINLEY COUNTY, NEW MEXICO

2021/2022-3 WATERLINE REPLACEMENT
IN LINCOLN & STRONG FROM 2ND TO VEGA
PRELIMINARY ENGINEERS PLAN

Dwg. No. ...
Date: JAN 2019
Drawn By: KAS
Scale: AS SHOWN

Checked By: MDP
Sheet 1 of 1