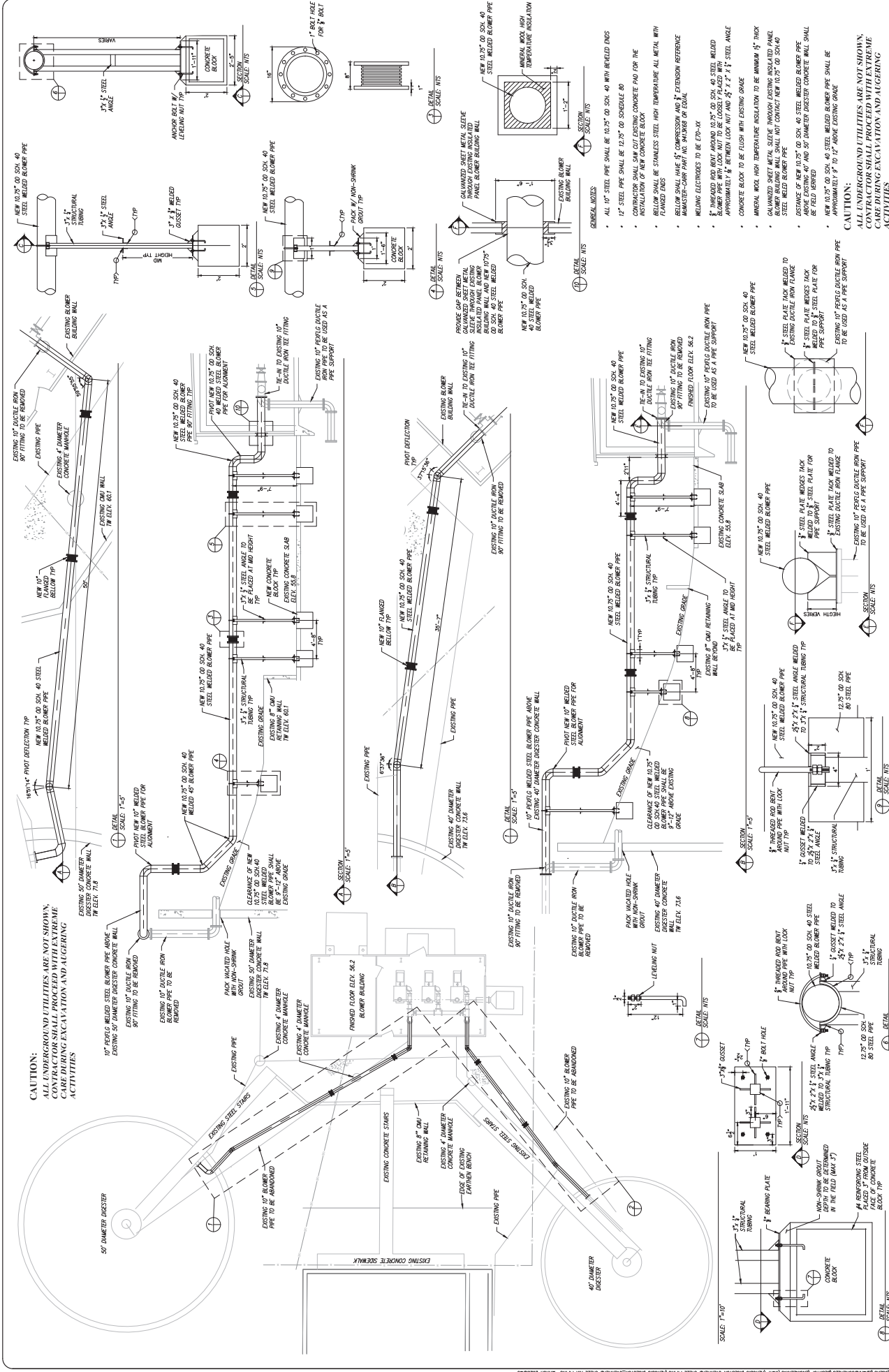


# **APPENDIX D**

Structural Detail

Sheet 1-1



**CAUTION:**  
 ALL UNDERGROUND UTILITIES ARE NOT SHOWN.  
 CONTRACTOR SHALL PROCEED WITH EXTREME  
 CARE DURING EXCAVATION AND AUGERING  
 ACTIVITIES

- GENERAL NOTES**
- ALL 1/2" STEEL PIPE SHALL BE 10.25" OD SCH. 40 WITH BEVELLED ENDS
  - 1/2" STEEL PIPE SHALL BE 10.25" OD SCHEDULE 80
  - CONTRACTOR SHALL SHIM OUT EXISTING CONCRETE PAD FOR THE INSTALLATION OF NEW CONCRETE BLOCK
  - BELOW SHALL BE STAINLESS STEEL HIGH TEMPERATURE METAL WITH FINISHED ENDS
  - BELOW SHALL HAVE 1/2" COMPRESSION AND 3/4" EXTENSION REFERENCE
  - WELDING ELECTRODES TO BE E70T-18
  - 3/4" THREADED ROD BOLT AROUND 10.25" OD SCH. 40 STEEL WELDED APPROXIMATELY 1/2" BETWEEN LOCK NUT AND 1/2" X 1/2" STEEL ANGLE
  - CONCRETE BLOCK TO BE FLUSH WITH EXISTING GRADE
  - MINIMUM 100% HIGH TEMPERATURE INSULATION TO BE MINIMUM 1/2" THICK
  - GALVANIZED SHEET METAL SLEEVE THROUGH EXISTING INSULATED PANEL STEEL WELDED BLOWER PIPE
  - FINISHES OF NEW 10.25" OD SCH. 40 STEEL WELDED BLOWER PIPE ABOVE EXISTING 4" AND 50" DIAMETER EXISTING CONCRETE WALL SHALL BE FIELD VERIFIED
  - NEW 10.25" OD SCH. 40 STEEL WELDED BLOWER PIPE SHALL BE APPROXIMATELY 9" TO 12" ABOVE EXISTING GRADE

**CAUTION:**  
 ALL UNDERGROUND UTILITIES ARE NOT SHOWN.  
 CONTRACTOR SHALL PROCEED WITH EXTREME  
 CARE DURING EXCAVATION AND AUGERING  
 ACTIVITIES

**SCALE:** 1" = 10'

**DATE:** JANUARY 2023

**DRAWN BY:** EAS

**CHECKED BY:** MDP

**SHEET** 1-1

**STRUCTURAL DETAIL**

**CITY OF GALLUP**  
 WASTE WATER TREATMENT PLANT  
 AEROBIC DIGESTER BLOWER PIPING

**DPA LLC ENGINEERING & SURVEYING LLC**  
 CIVIL ENGINEERS AND SURVEYORS  
 387 SOUTH 68 STREET GALLUP, NEW MEXICO  
 TEL: (505) 865-5488 WWW.DPAENGINEERING.COM