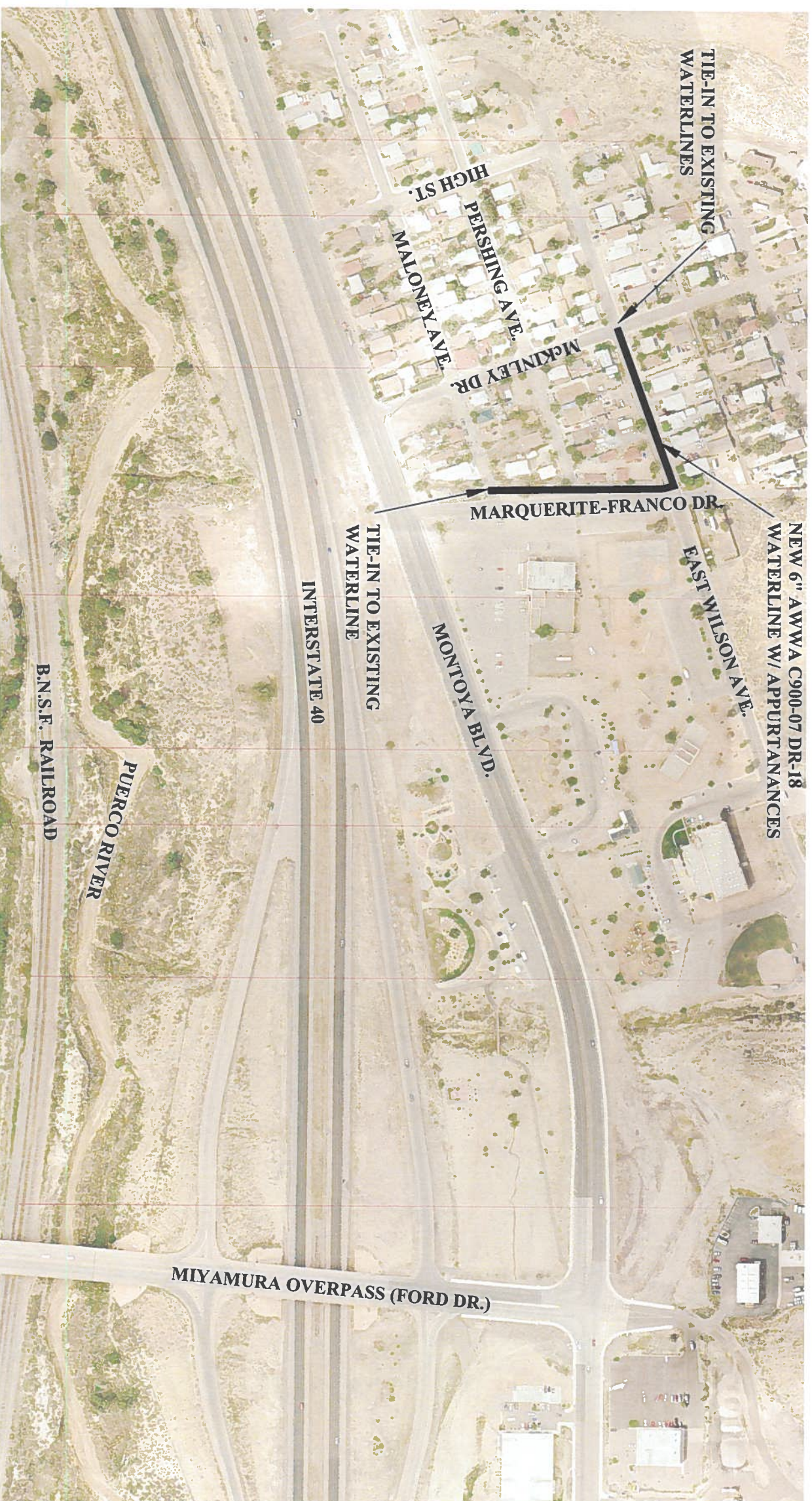




EAST WILSON AVENUE WATERLINE REPLACEMENT FROM MCKINLEY DRIVE TO MARQUERITE-FRANCO DRIVE PRELIMINARY PLAN


**DePAULI ENGINEERING
& SURVEYING, LLC.**
CIVIL ENGINEERS
& LAND SURVEYORS



for the
CITY OF GALLUP
McKINLEY COUNTY, NEW MEXICO

EAST WILSON AVENUE WATERLINE REPLACEMENT
FROM MCKINLEY DRIVE TO MARQUERITE-FRANCO DRIVE
PRELIMINARY PLAN

Dwg. No. ...
Date: FEB. 2021
Drawn By: KAS
Scale: AS SHOWN



Checked By: MDP
Sheet 1 of 1