

PRELIMINARY COST ESTIMATE
INTERSTATE 40/PUERCO RIVER 16" WATERLINE REPLACEMENT
September 2019

LOT 1 - 16" WATERLINE CONSTRUCTION

ITEM	DESCRIPTION	ESTIMATED QUANTITY	UNIT PRICE	AMOUNT
1	For 16" CI. 350 DIP waterline with granular bedding and rock free native backfill complete in place for the Unit Price per Linear Foot of:	2800 LF	\$138.00	\$386,400.00
2	For 16" resilient wedge AWWA horizontal gate valve with valve boxes and bypass valve assembly complete in place for the Unit Price per Each of:	5 EA	\$13,500.00	\$67,500.00
3	For Type 2A air release station (2" air valve size) including vault, piping, and fittings complete in place for the Unit Price per Each of:	3 EA	\$9,500.00	\$28,500.00
4	For Tie-in 'A' to existing 16" waterline including fittings and sleeves but not valves complete in place for the Lump Sum Price of:	LS	\$5,000.00	\$5,000.00
5	For Tie-in 'B' to existing 8" PRV supply and flush line including fittings and sleeves but not valves complete in place for the Lump Sum Price of:	LS	\$6,000.00	\$6,000.00
6	For Tie-in 'C' to existing 16" waterline including fittings and sleeves but not valves complete in place for the Lump Sum Price of:	LS	\$5,000.00	\$5,000.00
7	For 8" resilient wedge AWWA vertical gate valves with valve box for flush or other locations complete in place for the Unit Price per Each of:	2 EA	\$4,200.00	\$8,400.00
8	For vertical 16" DIP 1 1/4" ells as conditions require during construction complete in place for the Unit Price per Each of:	2 EA	\$2,000.00	\$4,000.00
9	For removal and replacement of Puerco River concrete slope protection, 4" thick wire mech reinforced concrete complete and in place for the Unit Price per Square Yard of:	50 SY	\$80.00	\$4,000.00
10	For removal and replacement concrete pavement trench patch, 8" non-reinforced concrete on 6" of base course complete and in place for the Unit Price per Square Yard of:	40 SY	\$140.00	\$5,600.00
11	For 5" thick gravel surfacing to replace existing that is lost during construction for the Unit Price per Square Yard of:	100 SY	\$30.00	\$3,000.00
12	For traffic control implementation for the Lump Sum Price of:	LS	\$5,500.00	\$5,500.00
13	For materials testing by independent testing lab (soil, concrete, base course, etc.). This amount to be used for totaling bid. Actual amount to be based on approved invoice:	Allowance	\$12,000.00	\$12,000.00

Lot 1 Subtotal: \$540,900.00

LOT 2 - 8" WATERLINE CONSTRUCTION

ITEM	DESCRIPTION	ESTIMATED QUANTITY	UNIT PRICE	AMOUNT
1	For 8" Cl. 350 DIP waterline with granular bedding and rock free native backfill complete in place for the Unit Price per Linear Foot of:	260 LF	\$58.00	\$15,080.00
2	For 8" resilient wedge AWWA vertical gate valves with valve box for flush or other locations complete in place for the Unit Price per Each of:	1 EA	\$2,000.00	\$2,000.00
3	For Type 2A air release station (1" air valve size) including vault, piping, and fittings complete in place for the Unit Price per Each of:	2 EA	\$7,500.00	\$15,000.00
5	For Tie-in 'D' to existing 8" water line including fittings and sleeves but not valves complete in place for the Lump Sum Price of:	LS	\$2,500.00	\$2,500.00
6	For Tie-in 'E' to existing 8" waterline including fittings and sleeves but not valves complete in place for the Lump Sum Price of:	LS	\$2,500.00	\$2,500.00
8	For vertical 8" DIP 1 1/4° ells as conditions require during construction complete in place for the Unit Price per Each of:	3 EA	\$975.00	\$2,925.00
10	For removal and replacemnt concrete pavement trench patch, 8" non-reinforced concrete on 6" of base course complete and in place for the Unit Price per Square Yard of:	40 SY	\$140.00	\$5,600.00
11	For 5" thick gravel surfacing to replace existing that is lost during construction for the Unit Price per Square Yard of:	50 SY	\$30.00	\$1,500.00
12	For traffic control implementation for the Lump Sum Price of:	LS	\$2,500.00	\$2,500.00
13	For materials testing by independent testing lab (soil, concrete, base course, etc.). This amount to be used for totaling bid. Actual amount to be based on approved invoice:	Allowance	\$5,000.00	\$5,000.00

Lot 2 Subtotal: \$54,605.00

Lots 1 & 2 Subtotal: \$595,505.00

Tax @ 8.3125%: \$49,501.35

Total Estimated Construction Amount: \$645,006.35

Engineering Design including Tax: \$ 69,800.00

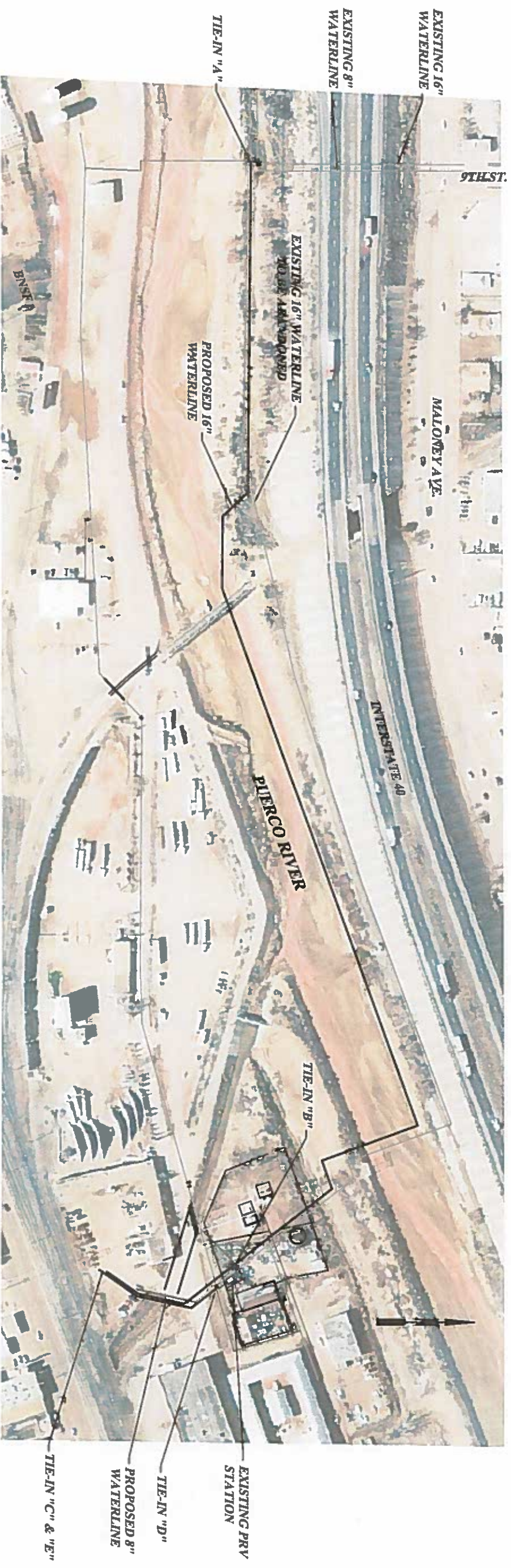
Construction Management including Tax: \$ 69,800.00

Project Total Amount: \$784,606.35

CITY OF GALLUP, NEW MEXICO

INTERSTATE 40 / PUERCO RIVER

16" WATER LINE REPLACEMENT



**INTERSTATE 40 / PUERCO RIVER
16" WATERLINE REPLACEMENT**

SCALE: 1"=100'
APPROXIMATE



D&P PAULL ENGINEERING & SURVEYING LLC
 CIVIL ENGINEERS AND LAND SURVEYORS
 1000 W. GARDEN AVENUE, SUITE 100
 GALLUP, NEW MEXICO 87301
 TEL: (505) 865-3333 WWW.D&PENGINEERING.COM

for the
CITY OF GALLUP
 MEDINLEY COUNTRY, NEW MEXICO

NO.	DATE

CITY OF GALLUP
 INTERSTATE 40 / PUERCO RIVER
 16" WATERLINE

**PRELIMINARY COST
 ESTIMATE**

DATE	BY	SCALE

SHEET
1 - 1